

Greetings!

Welcome to our new monthly e-newsletter, designed to keep you up-to-date with all that is happening through your support of English At Large! I hope you take a moment to read through these short snippets of news and feel connected to the great work you helped make possible. Have questions or comments? Simply hit reply to this email. I would love to hear from you!

Best regards,

Maureen

Maureen Willis, Executive Director



ENGLISHATLARGE

Your Impact: Supporting Life-Changing Services

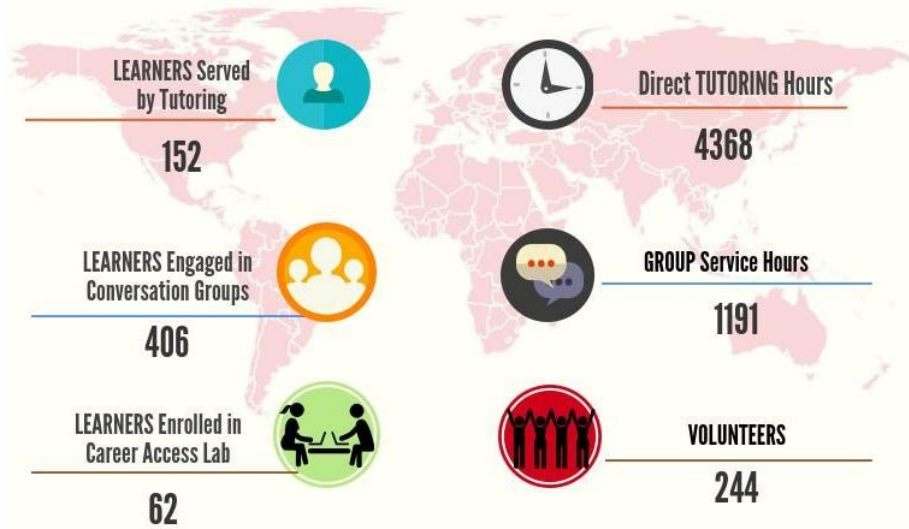
The results of our recent survey are in:

You want to hear more about the impact of your gifts!

Your contributions of time, talents and knowledge, as well as your financial support, bring life-changing services to more than 550 learners in our

21-community service area. Here is a snapshot of the difference you are making in your community:

English At Large Impact FY 2017



Communities Served:

Acton, Arlington, Bedford, Belmont, Billerica, Boxborough, Burlington, Carlisle
Concord, Lexington, Lincoln, Littleton, Medford, North Reading, Reading
Stoneham, Wakefield, Waltham, Winchester, Wilmington, Woburn

Our Annual Report for 2016-2017 is coming soon!

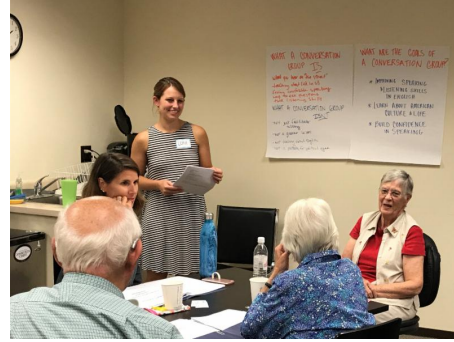
EAL Conversation Groups: The Talk of the Town!

Our Fall Conversation Groups are rolling out in the coming weeks! In total, 26 groups will be offered in 12 communities. Led by volunteer teams, these groups help intermediate to more advanced English-language learners expand their vocabulary, cultural knowledge and speaking confidence. Participants also form friendships that grow their network of support!

Facilitator Training

We recently held a training for new facilitators to support the expansion of our Conversation Group Program. 8 volunteers took part in a 4-hour interactive training workshop, which included the chance to meet 2 of our veteran

group leaders. With the support of our staff, these wonderful volunteers are now ready to co-lead our fall groups!



EAL Staff Update: Welcome Gretchen!

Gretchen Kellogg is a NAIP AmeriCorps member who will be leading our Career Access Lab in the coming year.

[Learn more about Gretchen here](#)

Want to Make a Difference in Your Community? Volunteer with English At Large!

We are now recruiting volunteers interested in committee work!

No experience needed - Just a passion for our mission and a hands-on, can-do attitude! We need creative people to join our Marketing and Fundraising

Committees. Help us raise awareness for EAL and keep our services available in your community! Click the links below for more information!

[Marketing Committee](#)
[Development Committee](#)

[Contact Maureen](#) for more information

Help Raise Awareness for EAL in Your Community! Host or Arrange a Community Gathering in Your Home, Club or Place of Business

Members of our staff and board love to connect with local people with a passion for our mission.

[Contact Maureen](#) for more information

Wanted: File Cabinet

We are in need of a 4 drawer upright or 3 drawer lateral file cabinet for our offices in Woburn.



[Contact Maureen](#) for more information!

Want to Make a Difference in Your Community? Make Your Donation Today to English At Large!

[Donate Now!](#)

 [Forward to a Friend](#)

English At Large | 781-395-2374 | www.englishatlarge.org

