



# ENGLISHATLARGE



## ANNUAL REPORT 2015

**"I can speak with  
confidence."**

**—Saber, Egypt**

**"I am so thankful for  
the opportunity to  
practice English."**

**—Jiayin, China**



# ENGLISHATLARGE

## Mission

**English At Large** is a nonprofit that provides individual and small group instruction through a volunteer network to adult immigrants and other newcomers who want to acquire English language skills as they adapt to life in the United States.

## Vision

Our vision is that newcomers will develop the English language skills and acquire the cultural knowledge needed to fully engage in their communities and fulfill their life goals.



## President's Message

Dear Friends,

I am honored to present the English At Large annual report for 2015, a year in which newcomers from 49 different countries turned to us for life-changing English language instruction.

If you are an existing supporter, thank you! Without you, we could not make the difference that we do. If you are a prospective supporter, please talk to us about ways that you can donate and volunteer. We are growing our capacity to help newcomers learn English and adapt to American life and will be grateful for your help.

This year we began a new campaign to recruit and train more volunteer tutors, especially in the locations where our waiting list of learners is longest. Our initial efforts have been promising: we increased the number of volunteers by 13% and the total volunteer hours by 5%. In the months ahead, we will be partnering with community groups, faith organizations, and local businesses to build on this success. This increase in volunteers allowed us to serve more learners – 7% more in our one-to-one tutoring program and 10% more in our conversation groups!

I want to extend special thanks to Gary Fallick and Jill Shuman, long-time board members whose terms ended this year.

Gary was a volunteer tutor first, then joined the board and served with distinction for more than ten years. He served two terms as our board president and contributed his amazing energy and creativity to every project he tackled.

Like Gary, Jill started her involvement with English At Large as a tutor and she also volunteered as a conversation group leader. She became a member of the board soon after and served for over six years, including several years as board secretary. Jill's optimism about what we could accomplish was inspiring and she was always willing to go the extra mile to make it happen.

Working alongside Jill and Gary on behalf of our learners was a true pleasure. They are missed on the board, but they remain strong supporters and will always be part of the English At Large community.

What's coming up? We are developing an exciting, and much-needed, English for workplace readiness program, in partnership with the New American Integration Program (NAIP). You'll be hearing more about that as the year progresses.

Catherine Corliss  
*President of the Board*



## Current Board of Directors

### President

Catherine Corliss  
*Senior Human Resources Consultant at  
Partners HealthCare System*

### Vice President

Laura Henry  
*Director of Marketing, Retired,  
Fidelity Investment Institutional Services Co.*

### Treasurer

Michael Creighton  
*Controller, KEW Group*

### Secretary

Elizabeth Barrett  
*Attorney with the Executive Office  
of the Trial Court*

### Members

Jeff Backerman  
*Independent Management Consultant*

Coley Carden  
*Assistant Vice President,  
Winchester Co-Operative Bank*

Sean Conor Chrisom  
*Associate Account Manager, Google*

Prashant V. Kaitkay  
*Management Consultant,  
PricewaterhouseCoopers LLP*

Ludy Liu  
*Embedded Software Engineer, Autoliv*

Hicham Mouhsin  
*Director of Human Resources,  
Wyndham Hotels and Resorts*

## Current Staff



Qingjian Shi  
*Executive Director*



Csilla Tambor  
*Director of Volunteer  
Engagement*



Erin Kreischer  
*Volunteer Coordinator*

## Where We Serve



## Who we served, 2015

**77% female and 23% male**

**76% of learners were unemployed or not in the labor force**

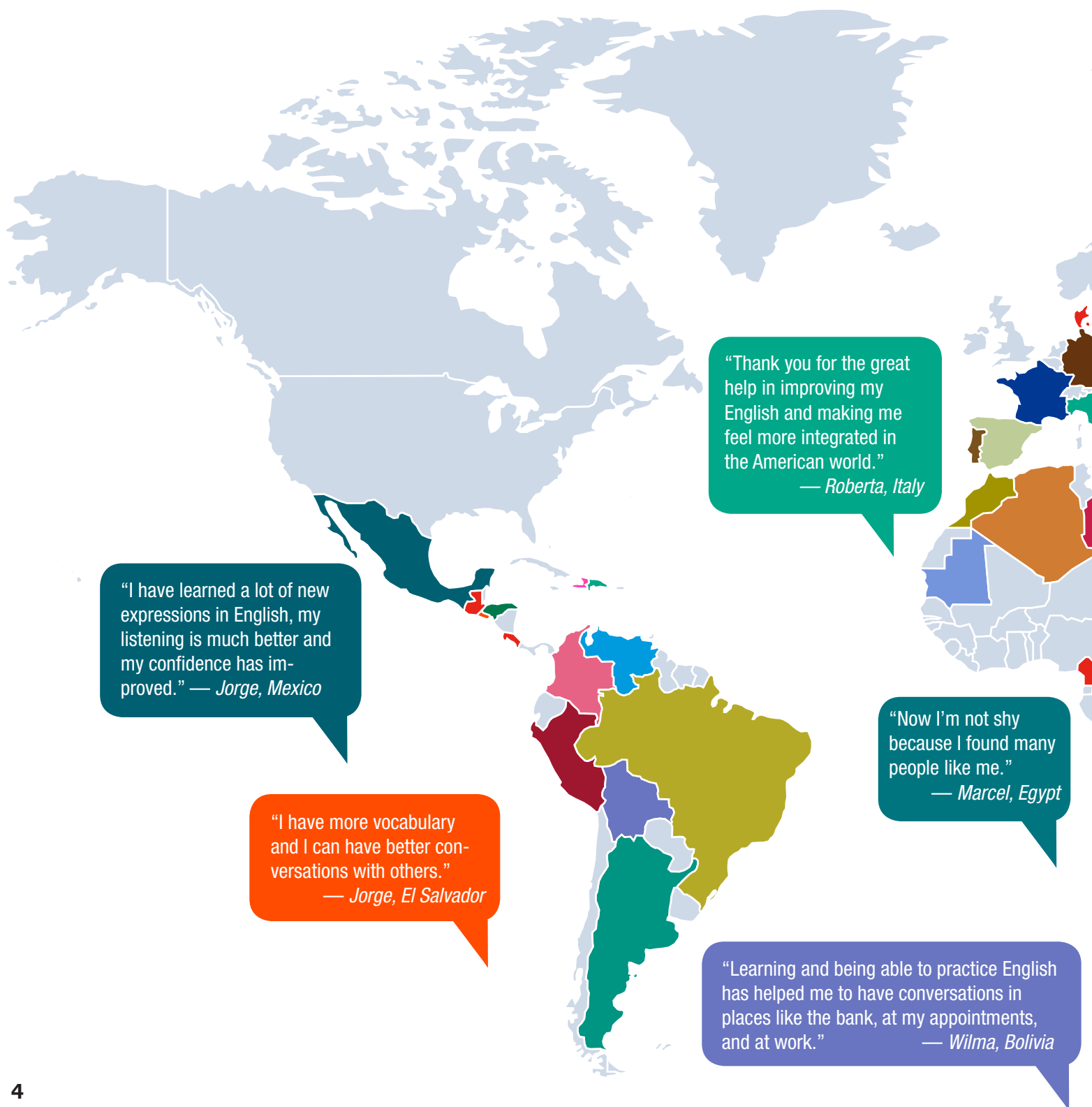
**70% of learners identify as low-income or receive public assistance**

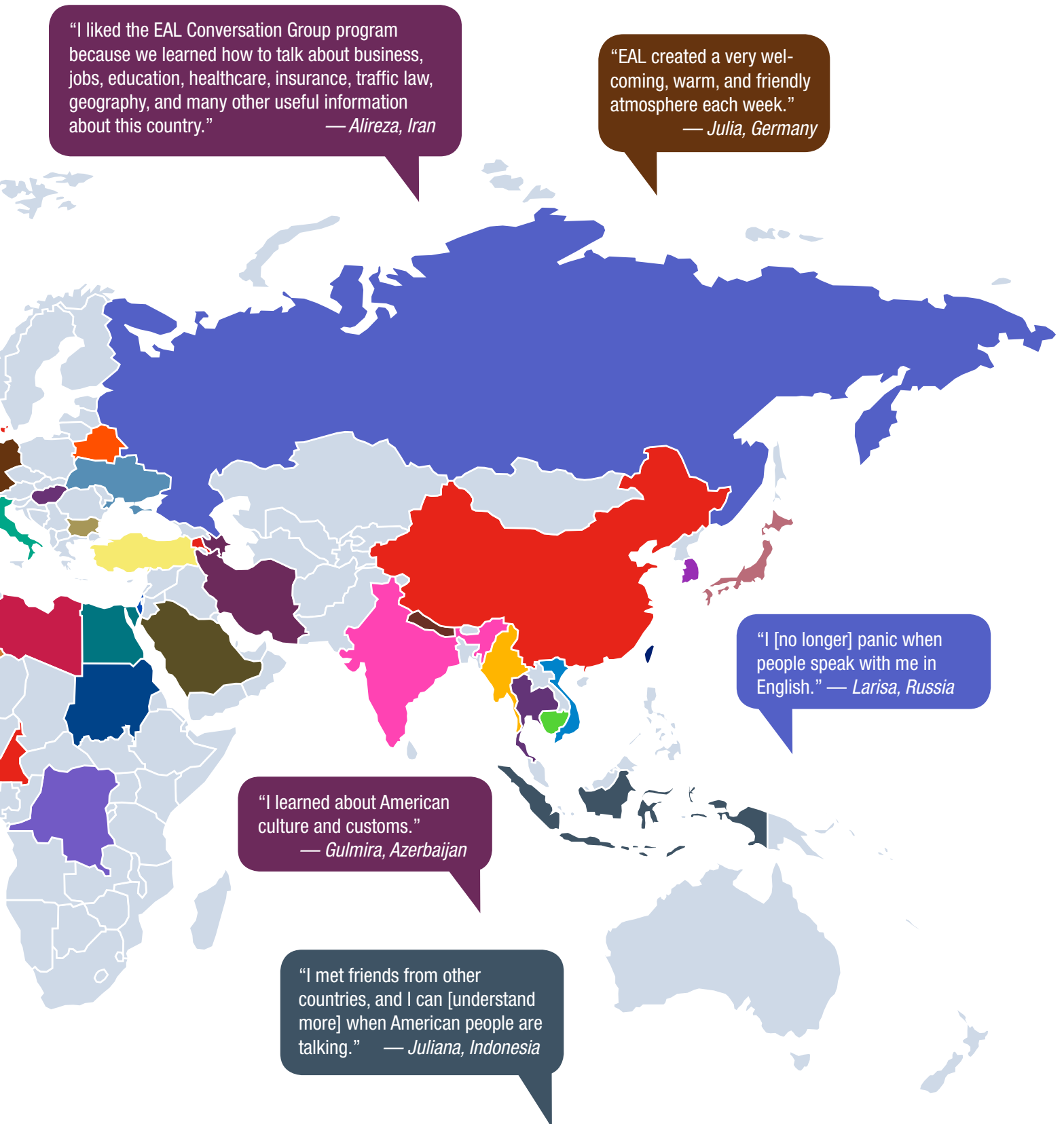
**65% with some college or a college degree**

**6% had an education below 12th grade**

## Our Learners in 2015

English At Large served English language learners from 49 countries.









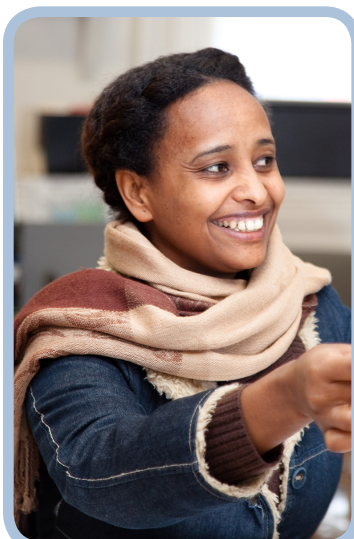
## This year, 2015

**128** learners were matched with a tutor

**311** learners enrolled in conversation groups

**7669** hours were donated by volunteers

**275** learners were put on our waitlist to receive services



## As a result

**601** goals were achieved by learners

**26%** of learners increased their reading/writing

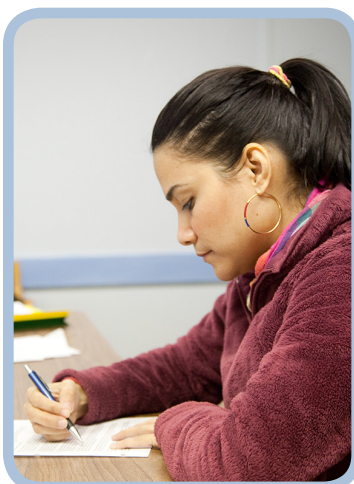
assessment scores

**27%** increased their listening/speaking assessment scores

**11** learners in our tutoring program got a job

**10** learners graduated with 200 hours of tutoring

**9** parents got involved in their children's educational activities



## Our Growth

**13%** increase in volunteers

**5%** increase in volunteer hours

We served **7%** more learners through our one-on-one volunteer program

We served **10%** more learners through our conversation group program

We served **61** more learners in 2015 than 2014

We added **5** additional conversation groups in 2015

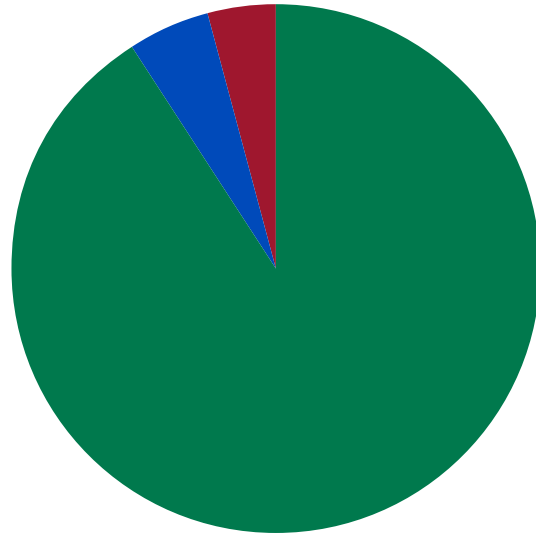




## Financial Report FY 2015

*Breakdown of Expenses*

Programs (including in-kind services) 91% ■  
Administration 5% ■  
Fundraising 4% ■



### Income

Massachusetts Department of Elementary and Secondary Education .....	\$105,000
Corporate and Foundation .....	\$34,917
United Way .....	\$7,500
Donations from individuals .....	\$25,420
Special events/online auction .....	\$13,995
Other .....	\$686
<b>TOTAL INCOME .....</b>	<b>\$187,518</b>

### Expenses

Programs & Services.....	\$148,746
Management & Administration .....	\$18,098
Fundraising .....	\$15,733
<b>Total Expenses.....</b>	<b>\$182,577</b>

**Net Income .....** **\$4,941**

**Total Liabilities and Net Assets.....** **\$124,175**

### In-Kind Services, Space, and Materials

Program and office volunteers.....	\$176,924
IT Services.....	\$2,574
Postage, supplies, & printing* .....	\$8,165
Office space .....	\$20,000
<b>TOTAL IN-KIND.....</b>	<b>\$207,663</b>

*Printing services* - Our deepest gratitude goes out to our corporate partner, *Standard Duplicating Machines Corp.* for donating the printing services for this annual report.

*Design services* - Thanks to *Courtney McGlynn* for donating the design services for this annual report.



## Individual Supporters

*You made all the difference.*

### \$1000 and above

*Jeff Backerman  
Andrew Chesterton  
Marjorie Liner &  
Christopher Connolly  
Catherine Corliss  
Gary Fallick  
Laura Henry  
Jonathan Lloyd-Jones &  
Marlana Patton  
Donald Martini  
Steven Reny*

### \$500 - \$999

*Jon Aster  
Peter Fekkes  
Evan Fitzpatrick  
Florence Koplow  
Becki and Jim Kupel  
Maggie Pax  
Carol Rissman  
Howard Stoner  
Michael Tsuk & Edith Epstein*

### \$250 - \$499

*Coley Carden  
JoAnn Eurich*

*Vicky Ford  
Bernice Goldman &  
David Gaynor  
Miriam Greenberg  
Kunal Kandimalla  
Martine Mangeat  
Jean Mulroy  
Duke Oakes  
Robert Waehler  
Charles R. Wahl*

### \$100 - \$249

*Marie Ariel  
Stephen Baldi  
Elizabeth Barrett  
Timothy Blancke  
Carl Brauer  
Phyllis Brooks  
William Brown  
John and Barbara Chickosky  
Linda and Norman Cohen  
David Dier  
Kelly Dunn  
Dan H. Fenn Jr.  
Sharon Fletcher  
Del Friedman  
Anne Frymer  
Joy Gilbert  
Sandra Hackman  
Sarah Harder  
Julia Hibben  
Carol Hollingshead  
Angela Jennings  
Jeanne Joy  
Arthur Kress*

*Melissa Lang  
Ludy Liu  
Anne Mark  
Judith Miller  
Christina Morris  
Sandy Nayak  
Corie Nichols  
Pushpa Patel  
Elizabeth and Guy Reny  
Elisabeth and Richard Sayre  
Anne Serotkin  
Jill Shuman  
Betsy Singelais  
Julie Sussman  
Nancy Winsten  
Dabo Shi & Keren Yu*

### Up to \$99

*Anonymous  
Joel Abrams  
Linda Alexander  
Elizabeth Anderson  
Geraldine Atkins  
Jill Auger  
Judith Bell  
Maureen Bennani  
Jeanne Berkman  
Ingrid Buglioli  
Michael Carpenter  
Caroline Chapell  
Jean Chen  
Barbara Cracknell  
Frederica Matera Cushman  
David Desjardins*

*continued on next page*

Laura Dickerson  
Darlene Dowdy  
Elizabeth Durrell  
Pam Foresman  
Kevin Geaney  
Peter Gimber  
Nazanin Gregoretti  
Kitty Guo  
Paula Hamburger  
Charlotte Harrison  
Donald Henry & Lynn Smolik  
Martha Henry  
Negarre Heshmat Moore  
Erin P. Holmquist  
Hong-Chang Hong  
Eleanor IxChel  
Prashant Kaitkay  
Marian Kennedy  
Shayna Loeffler  
Cristina Lysakowski  
Gretchen Maier  
Garvin M. Moore, Jr.  
Ngoc Mai T Nguyen  
Arlayne Peterson  
Flora Rabinovich  
Donna and Jeswald Salacuse  
Xingyu Shao  
Audrey Shuman  
Elaine Smith  
Jennifer Souza  
Susan Tafler  
Rhoda Taschioglou  
JoAnn Thrasher  
Michiko Toyoda  
Kate Tranquada  
Julia Weeks  
Sara Wilbur  
Beverly Williams

## Organization Supporters

*We offer thanks to these organizations for their support in FY 2015.*


Amazon Smile Foundation & Amazon Affiliates  
Acton/Boxborough United Way  
Acton/Boxborough Youth in Philanthropy  
Clipper Ship Foundation  
Concord/Carlisle Community Chest  
Cummings Foundation  
En Ka Society  
First Congregational Church in Stoneham  
Forest Foundation  
Foundation for Metro West  
Frank W. and Carl S. Adams Memorial Fund  
Koundakjian & Company  
Massachusetts Department of Elementary and Secondary Education  
Reading Cooperative Bank  
SAGE Publications Inc.  
Standard Duplicating Machines Corp.  
The Lenny Zakim Fund  
Waters Corp.  
Whole Foods Market  
Winchester Co-operative Bank

*English At Large is also grateful to the many businesses, community centers, local public libraries, faith-based organizations, and individuals who contributed goods and services to our fundraising efforts and our business operations.*

*Every effort has been made to ensure that our list is correct. If there has been an inadvertent omission, please contact us at 781-395-2374 or email: [info@englishatlarge.org](mailto:info@englishatlarge.org)*



# ENGLISHATLARGE



“English At Large helped me improve my speaking skills, increased my vocabulary, and helped me make friends.”

—*Magda, Mexico*

“English At Large helped me lose the fear [of speaking English].”

—*Ana, Guatemala*